



## ZL-V2

The compact and lightweight dynamometer

Equipped with:

- ✓ Radio remote control with integrated display
- ✓ Carrying case
- ✓ Lightweight aluminum housing
- ✓ Display values freely configurable (kg,t,lb,to,kN)

# Advantages



## Simple operation

The measured values are transmitted wirelessly to the radio remote control, which can be used to control all functions.



## Integrated display

The large, illuminated display on the remote control reliably shows all values - the operator can quickly and easily record all information and freely select the display units (kg, t, lb, to, kN).



## Individual adaptable

The dynamometer can be fitted with the required shackles, hooks etc. to suit your needs - we will be happy to advise you on the right choice!



## Functional

All the important functions you need for weighing can be implemented with the ZL - taring, unit change, maximum value, totalizing.



## Compact and handy

The high-quality aluminum housing makes the ZL extremely light and simplifies the attachment of the tension measuring lug - all components are neatly stored in the handy transport case.

## Product details



**Hugh display at remote control**



**Robust load cell**



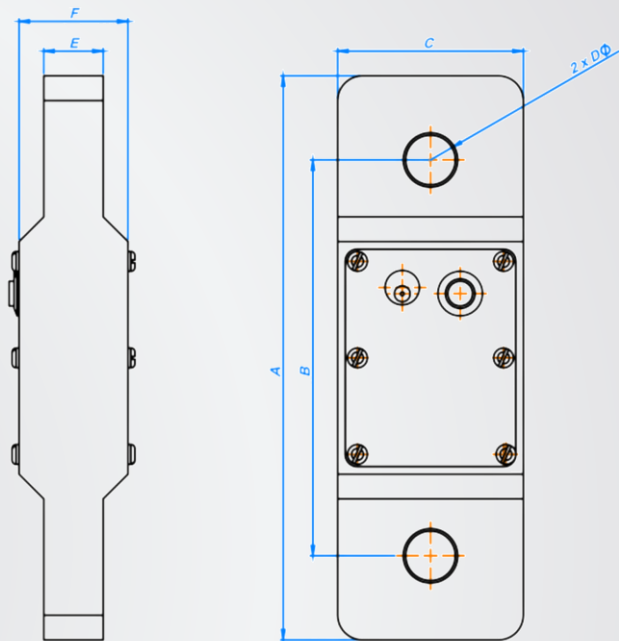
**Handy transport case**



# ZL-V2

Technical Data Dynamometer ZL-V2	
Accuracy class	0.1% of the measuring range
Measuring ranges	3/5/12,5/25/35/50/75/120t
Maximum operating force (FG)	150% of the weighing range
Breaking force (h)	>300% of the weighing range
Service temperature range	-20...+70°C
Power supply	Integrated Li-Ion battery 8,4V 2800mA
Battery operating time	ca. 80h
Protection class (EN 60529)	IP 65

Technical data radio remote control	
Frequeny	LORA-Funk 430,625-44,625MHz
Transmission rate	120 Measured value/Min
Range in line of sight	ca. 100m
Display	LCD, 5-digit
Digit height	12mm
Power supply	Integrated Li-Ion battery 8,4V 2800mA
Interface	RS232 Socket
Dimensions: (W x H x D)	200x104x39mm



Dimensions in mm

ZL	A	B	C	ØD	E	F
ZL-V2 3	228	160	75	20	24	44
ZL-V2 5	250	176	84	26	32	44
ZL-V2 12,5	300	192	108	40	50	50
ZL-V2 25	350	206	144	52	65	65
ZL-V2 35	386	232	168	58	75	75
ZL-V2 50	450	248	202	71	90	90
ZL-V2 75	480	236	244	84	110	110
ZL-V2 120	550	290	270	97	141	141

## ZL-V2

The compact and lightweight tension measuring dynamometer

Model	Measuring range (in kg)	Readability d (in kg)	Weight in kg
ZL-V2 3	0 - 3.000 kg	0,5	1,5
ZL-V2 5	0 - 5.000 kg	1,0	2
ZL-V2 12,5	0 - 12.500 kg	2,0	3,5
ZL-V2 25	0 - 25.000 kg	5,0	8,5
ZL-V2 35	0 - 35.000 kg	10,0	11,5
ZL-V2 50	0 - 50.000 kg	10,0	19
ZL-V2 75	0-75.000 kg	20,0	32
ZL-V2 120	0-120.000 kg	50,0	52
Further loads up to 500t on request!			



**EHP Wägetechnik GmbH**

Dieselstraße 8

77815 Bühl

Tel. +49 72 23 9366 0

Fax +49 72 23 9366 60

Email: [info@ehp.de](mailto:info@ehp.de)



## About us

EHP is a medium-sized company with representatives all over the world. We are crane scale and load cell specialists with our own development, production and a comprehensive service division - all made in Germany. With more than 30,000 scales in active use worldwide, we are one of the market leaders. Our customers value our ability to react quickly and our willingness to always find the right weighing solution.



**[www.ehp.de](http://www.ehp.de)**

# REFERENCES



Our EHP scales are used by the following companies :

			<p>And many more!</p>

